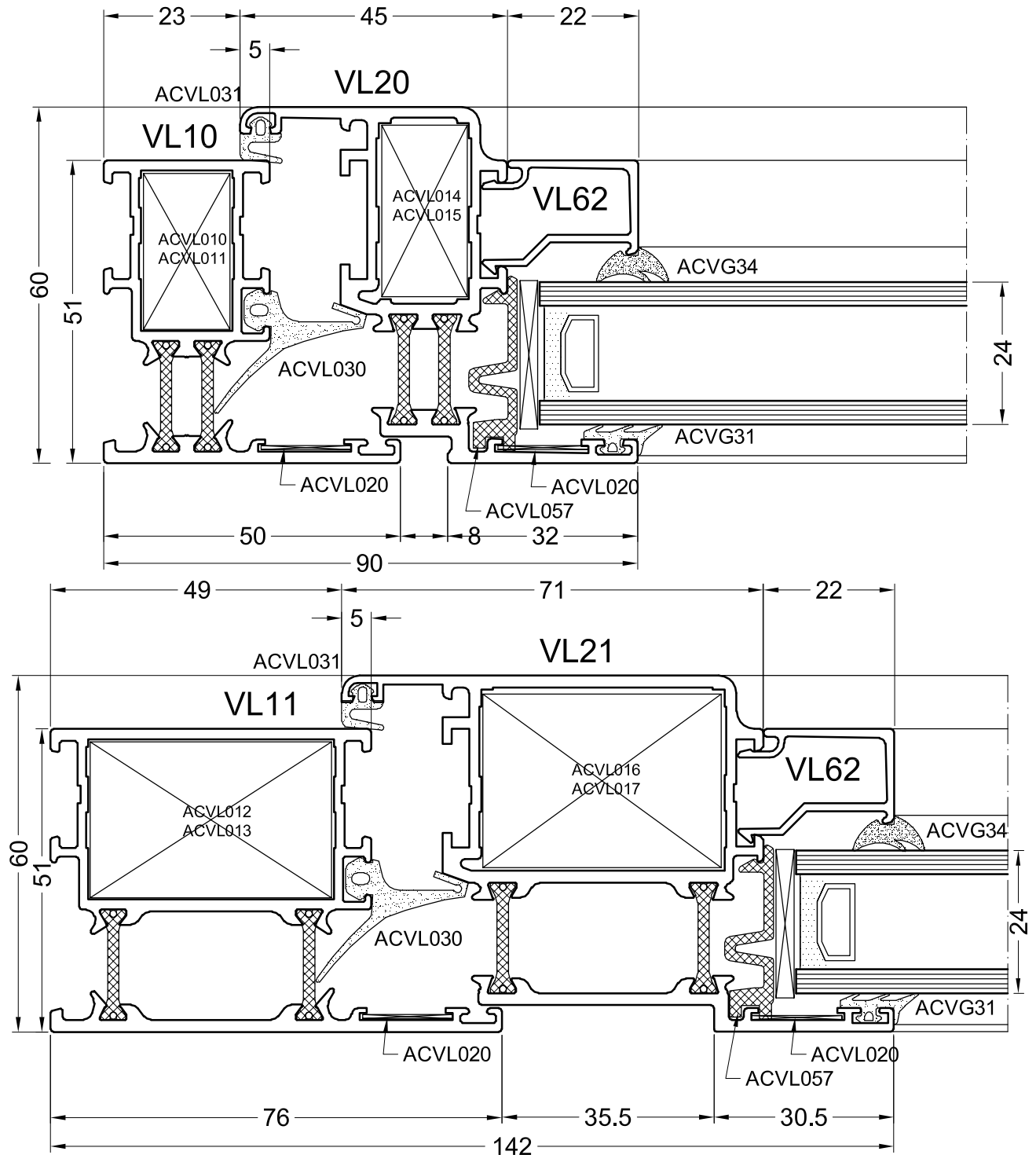


Technical Card

VISOLINE

VL



vi

system (depth 51mm) for windows and doors with thermal break

Description

Standard series of profiles with thermal break, used for most traditional door and window applications in houses and industrial buildings.

Applications

Windows:

Fixed windows for single or double glazing
Single or double sash side-hung open-in or open-out windows
Tilt and turn windows
Outward opening top-hung windows
Pivot windows. Horizontal or vertical.
Commercial and residential single or double doors. (Residential doors are open in only)
Tilt and slide windows and doors with appropriate hardware.
Possibility to bend the profiles for applications such as: round windows, pointed and basket arches
Rounded glass beads are available for a Soft-look

Doors:

Commercial and residential doors
Single or double sash
Residential doors are open-in only

Materials

Aluminium: AlMgSi 0.5 Type 6060/6063 T5 in condition F22 (according to NBN P21-001 and DIN 1725).
Tolerance according to DIN 17618.
Sealings: E.P.D.M. according to DIN 7863, TV 110, NFP 85301, ISO 3994. Tested and approved according to an artificial ageing test of "Plexi glass" combined with vulcanised rubber.
Thermal break: polyamide strips PA 6.6.25% reinforced with glass fibre.

Finishing

Electrostatic Powdercoating: according the guidelines of A.P.A.-Qualicoat in most of the current RAL-colours. The composed profiles (with thermal break) can be coated with different inner and outer colours ("DUAL-Color").
Anodisation in satin or bronze colours with EWAA/EURAS-Qualinod qualitylabel.
Metallic Structure coating: the third generation and the best quality powder coating.
All coatings come with the normal 15 year MARINE guarantee and Qualicoat certificate.

Thermal break

The profiles consist of 2 aluminium extrusions which are separated from one another by polyamide strips PA 6.6.25 reinforced with glass fibre. A gluing thread, rolled and pushed in together with the thermal break profile ensures a strong adhesion after melting and flowing, when the profiles are heated in the hardening furnace.

Performance level

according to STS 52.0:

Air transmission:	PA3
Mechanical resistance to wind:	PV3
Watertightness	PEE 1000 Pa

according to UEATC:

Air transmission:	A3
Mechanical resistance to wind:	V3
Watertightness	E4

Details

Windows:

Built-in depth: outer frame 51 mm, sash 60 mm
Glazing rebate: 22 mm
Hardware rebate: according to the current European sizes (EURONUT)
Sealings: centre seal and inside stop rubber
Glazing: from 4 up to 37 mm
k-value: 3,110 W/m²K (Rahmenmaterial-Gruppe 2.2)
Various forms of hardware and finishing available
Windows can be joined with variable couplings or standard fixed couplings (such as 90° and 135°) using profiles with thermal break
Adapter profiles for roller shutters
Sill adapter
Window sill profiles in various depths available

Doors:

Built-in depth: outer frame 51 mm, sash 60 mm (residential doors)
Glazing rebate: 22 mm
Sealings: with 2 stop sealings in extruded E.P.D.M.
Glazing: from 4 up to 37 mm
Direction of opening: both inwards and outwards
Various forms of hardware and finishing available
Possibility to bend the profiles
Rounded glass beads are available for a Soft-look